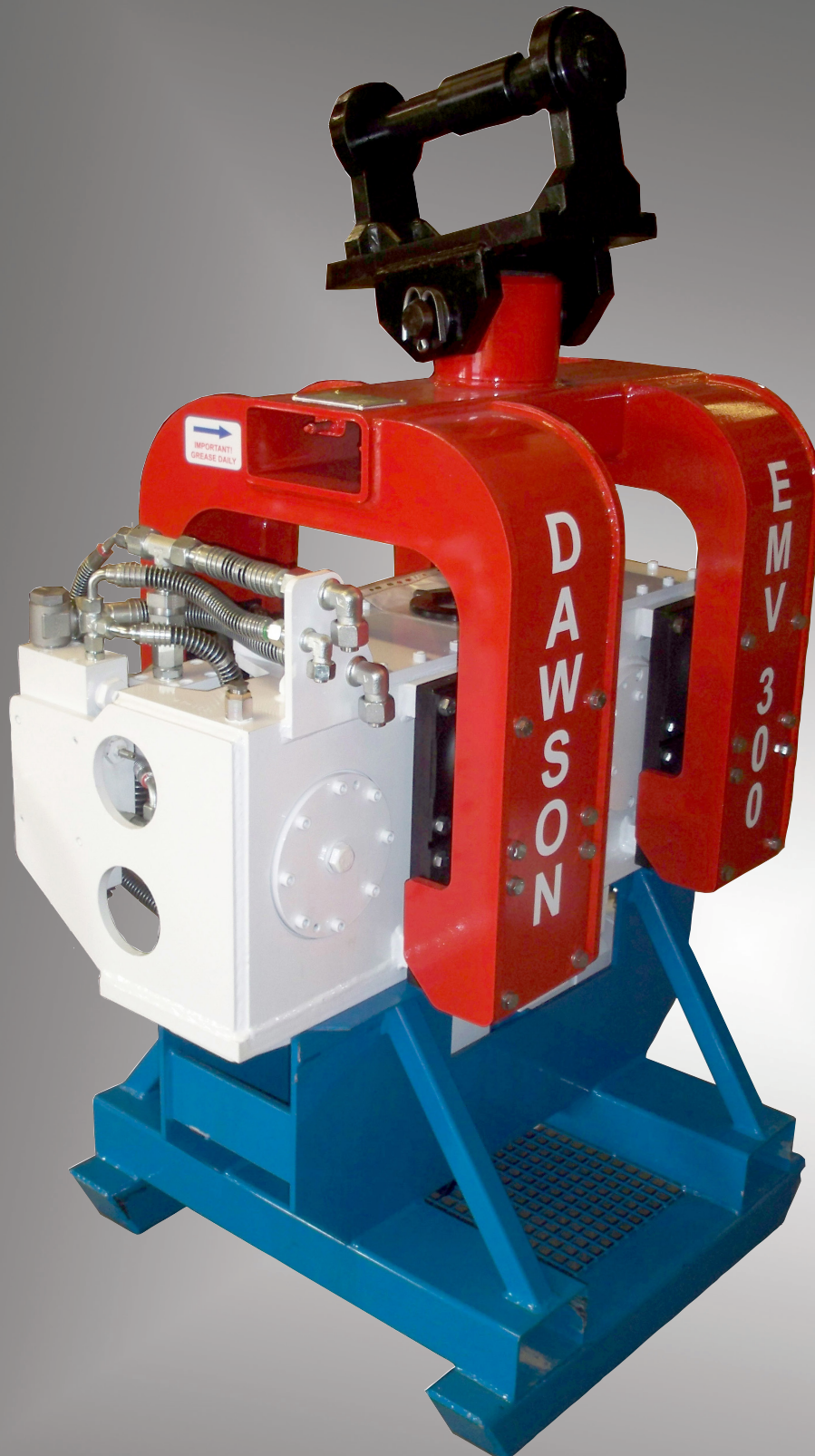


# inspection procedure | EMV



## excavator mounted vibrator

general maintenance procedure

DAWSON CONSTRUCTION PLANT LTD.  
CHESNEY WOLD,  
BLEAK HALL  
MILTON KEYNES  
MK6 1NE, ENGLAND  
TEL: +44 (0) 1908 240300  
FAX: +44 (0) 1908 240222  
EMAIL: JON@DCPUK.COM

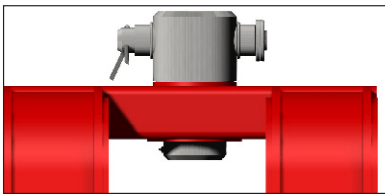
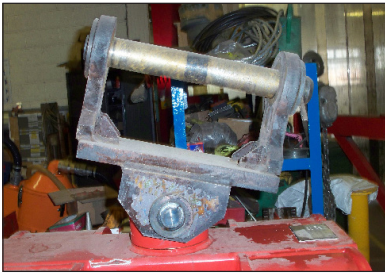


**DAWSON**  
CONSTRUCTION PLANT LTD

www.dcpuk.com



# adaptor bracket assembly



Old position of grease point on post



New position of grease point on end of saddle



## Remarks:

- Check for wear on pin adaptor
- Visual inspect weld condition
- Check bushes for wear
- Check pin is ok, free from warping



Severe wear to pin

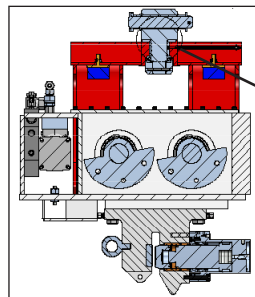


Wear to adaptor

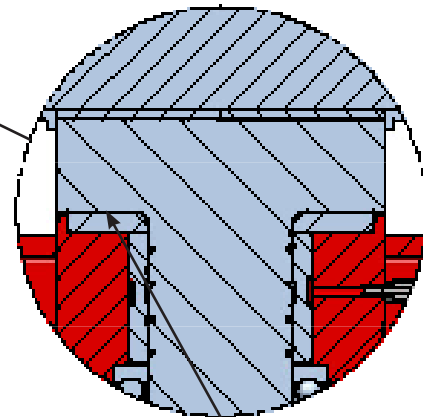
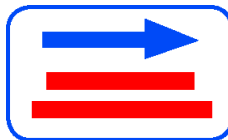


Wear to bush

- Check for wear to post



- Grease



When EMV is lifted, check there is no more than a 1mm gap here. A gap could mean wear to bearing or thrust washer

# saddle assembly



## Remarks:

- Visual inspect saddle for cracks
- Check sandwich mounts for splits / damage

- Check bump stops for damage

# gearbox assembly

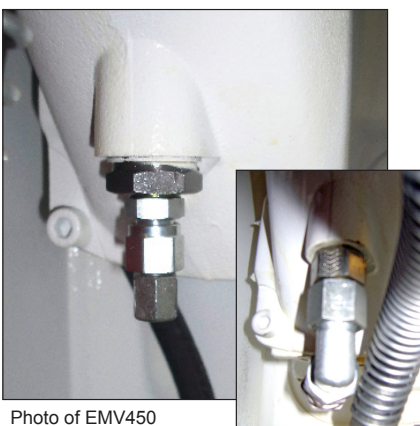
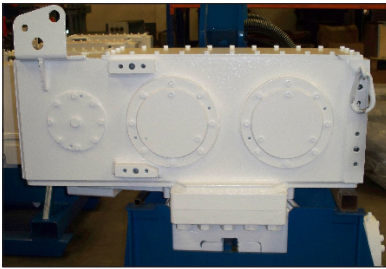


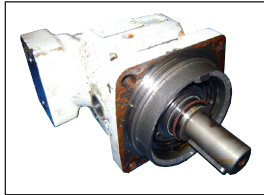
Photo of EMV450

Photo of EMV300



## Remarks:

- Check general condition
- Check temperature of bearing - (Run on test pile for 15mins, check and compare, temperatures on bearing caps should be even)
- Visual check for oil leaks - Bearing Cover / Gasket
- Ensure all bolts are tight



Damage to motor due to incorrect fitting of drain line



Temperature check on bearings with laser temperature gun

- Check case breather valve
- Check oil levels



- Check motor blow off valve

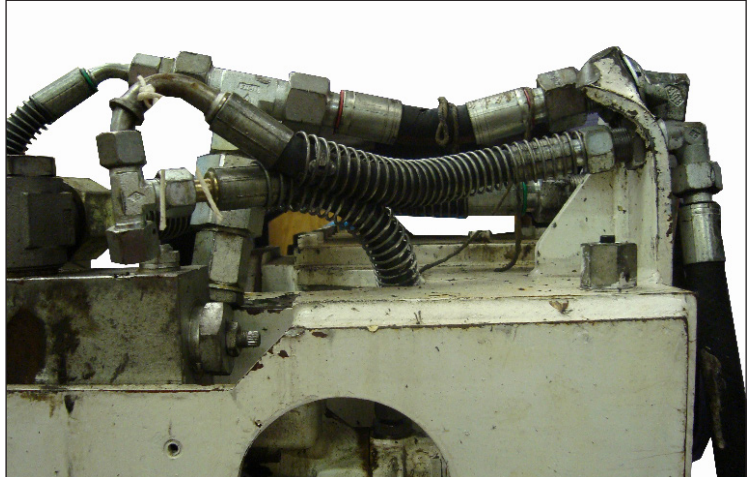


# hose assembly



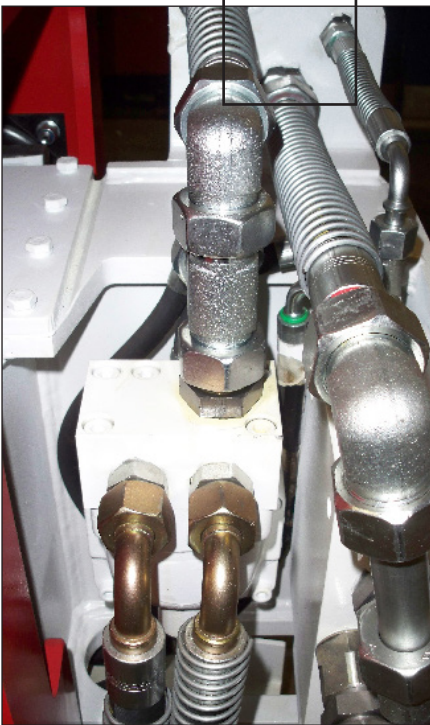
## Remarks:

- Check general condition
- Check spring guard condition

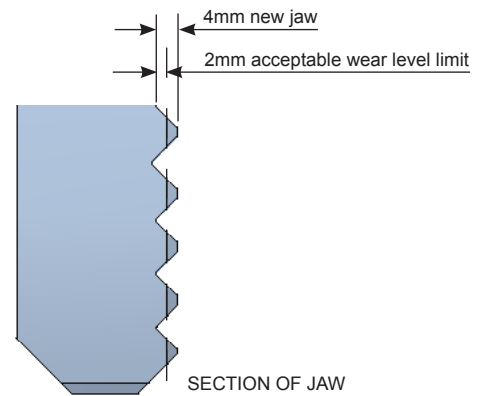
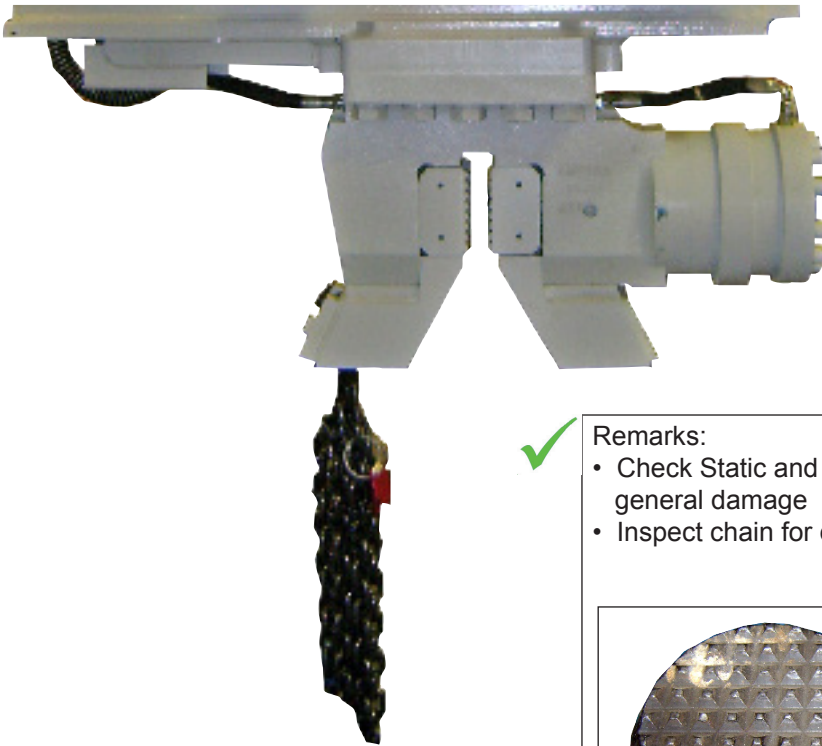


Severe damage to hose assembly

- Insure fittings are all tight
- Check for running leaks



# clamp assembly

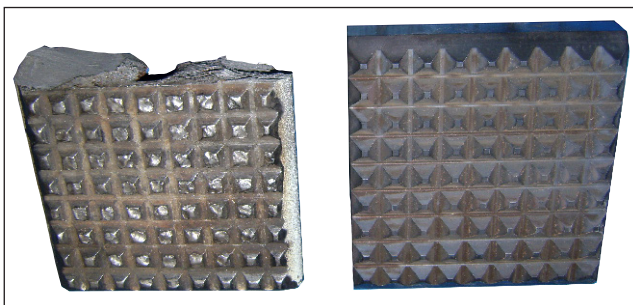
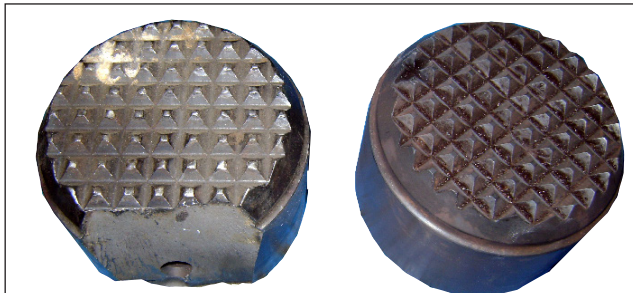


SECTION OF JAW

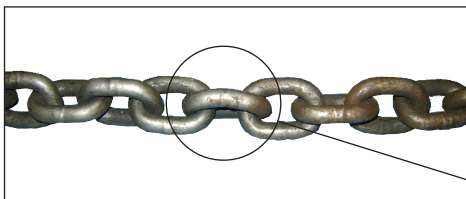


## Remarks:

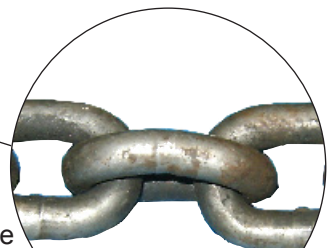
- Check Static and Moving jaw wear on teeth and general damage
- Inspect chain for damage



Severe damage and wear to teeth on jaws on left, in comparison new jaw on right



Damage to chain link



- Inspect chain clamp where fitted for damage



Chain clamp on EMV300

stand



Remarks:

- Inspect general condition of stand





D.C.P. RESERVES THE RIGHT TO DISCONTINUE EQUIPMENT AT ANY TIME, OR CHANGE SPECIFICATIONS OR DESIGNS WITHOUT NOTICE OR INCURRING OBLIGATIONS

INNOVATIVE PILING EQUIPMENT

HYDRAULIC PILING HAMMERS

EXCAVATOR MOUNTED VIBRATORS

EXCAVATOR MOUNTED DRILLS

QUIET, VIBRATIONLESS PUSH-PULL PILING

PILE EXTRACTION

SHEET PILE GUIDE FRAMES

SHEET PILE CAPPING SYSTEMS

CFA CLEANERS

PILE POINTS & SPLICERS

SAFETY HANDLING / LIFTING EQUIPMENT

SHEET PILE THREADERS

excavator mounted vibrator  
inspection procedure

DAWSON CONSTRUCTION PLANT LTD.  
CHESNEY WOLD,  
BLEAK HALL  
MILTON KEYNES  
MK6 1NE, ENGLAND  
TEL: +44 (0) 1908 240300  
FAX: +44 (0) 1908 240222  
EMAIL: JON@DCPUK.COM



www.dcpuk.com